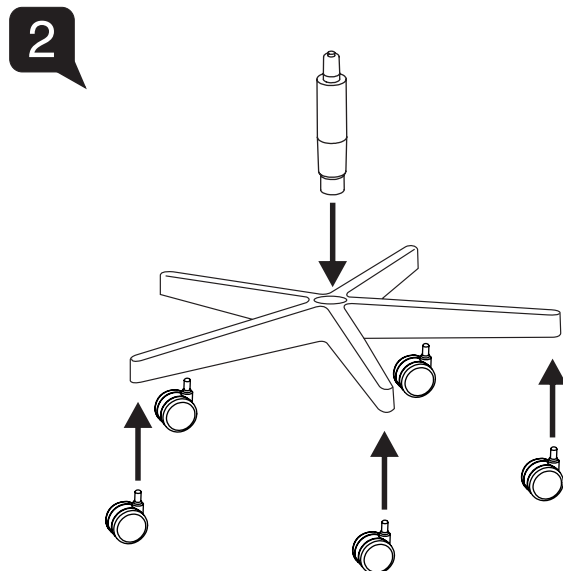
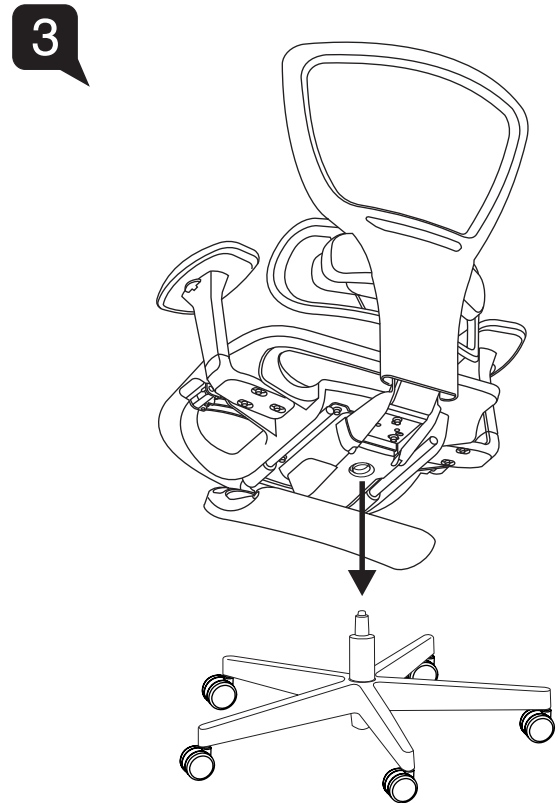
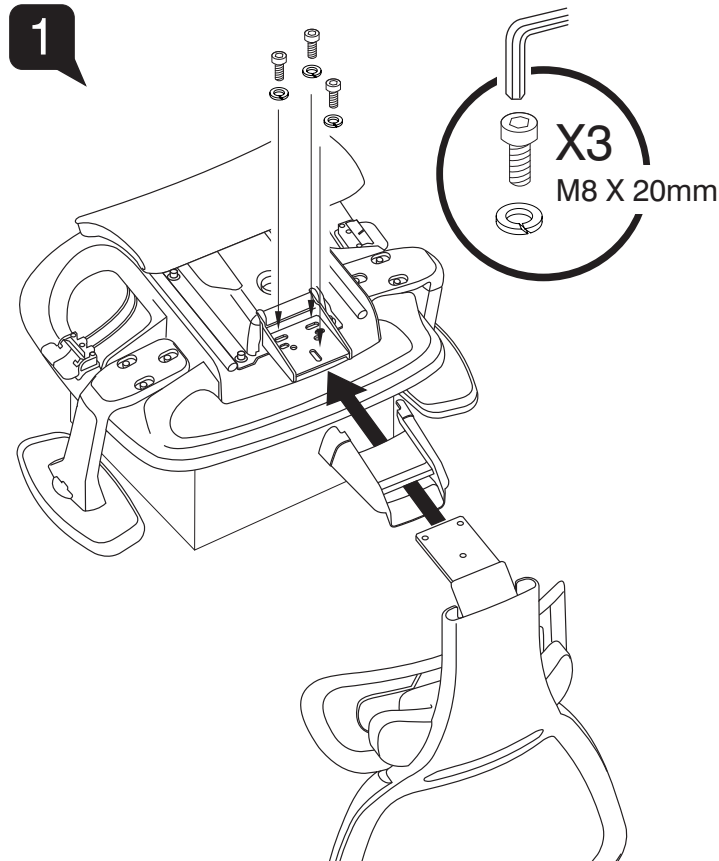
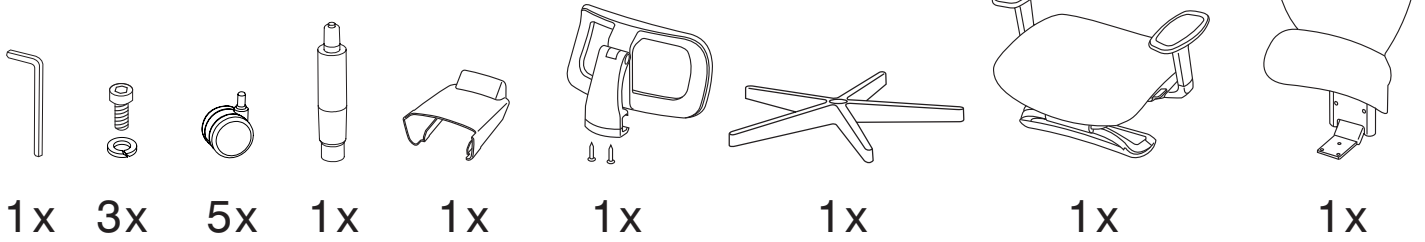


ZENIT

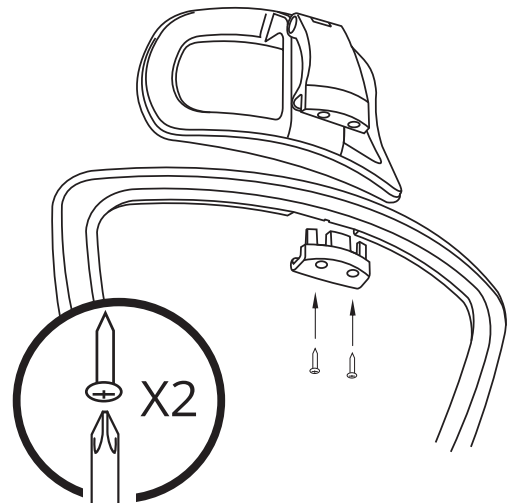
model : 1348 YR A87 NB / 1349 YR A87 NB
1358 YR A87 NB / 1359 YR A87 NB

Assembly Instruction

MERRYFAIR®



4 For 1349 & 1359 model.



ZENIT

model : 1348 YR A87 NB / 1349 YR A87 NB
1358 YR A87 NB / 1359 YR A87 NB

User Instructions

MERRYFAIR®

- A Seat Height Adjustable**
Flip up lever on right-side to raise or lower seat. Adjust such that your feet are adequately supported on floor.
- B Multi-Position Tilt Lock**
Recline to desired position, and flip up lever to lock. Flip down lever to release tilt-lock.
- C Backrest Height Adjustment**
Hold backrest by both sides and pull up, one step at a time, to desired height. To lower backrest, pull it up till maximum height and then, return it to lowest height to start again. Adjust height so that the backrest curvature follows the curve of your back.
- D Lumbar Depth Adjustment**
While you are on the chair, press the lever on the right side to release the lock, the lumbar support will support your back. If you prefer on fixed position, adjust the lumbar depth and press the left lever to lock.
- E Armrest Height**
Press the button and raise or lower the armrest. Adjust height to adequately support elbows to take strain off shoulders.
- F Armpad Angle**
Grasp armpads and rotate them inwards or outwards to adjust elbow support to suite specific tasks. An inward position works during keyboard use, while an outward position is recommended during mousing.
- G Armpad Depth**
Grasp armpads and push them forwards and backwards to suite your arm support.
- H Armpad Width**
Grasp armpads and slide out or inwards to desired width to match shoulder width. Adjust such that elbows are resting on armpads at a natural angle.
- I Seat Depth Adjustment**
Pull the lever under the left-side of the seat to adjust fore and aft position. Adjust such that the front edge is not pressing on the calves while your back is resting on backrest.
- J Headrest Height & Angle** (For 1349 & 1359 model)
Adjust height by holding both sides of headrest and pull up or down to your desired height and angle.
- K Footrest** (For 1348 & 1349 model)
Pull out to desired length and flip up the footrest. Pull up the footrest to highest until you heard a 'click' sound to fold it.

